

## Calendar Highlights

see our website for details on all ENCORE happenings; click 'Calendar'

### September '22

- Beaverton Parade - Join Us!
- 12th - Fall/Spring Season "Unite" Begins

### October '22

- 23rd - October Moon Festival & Youth Kids Battle

### November '22

- 23rd - 26th - ENCORE Closed

### December '22

- 19th - Jan 1st - ENCORE Closed

### January '23

- 2nd - Classes Resume
- 15th - Musical Theatre Costume Fee Auto-Process

### February '23

- 15th - Recital Costume Fee Auto-Process

### March '23

- 27th - Apr 1st - ENCORE Closed

### April '23

- Company & Crew Showcase Performance

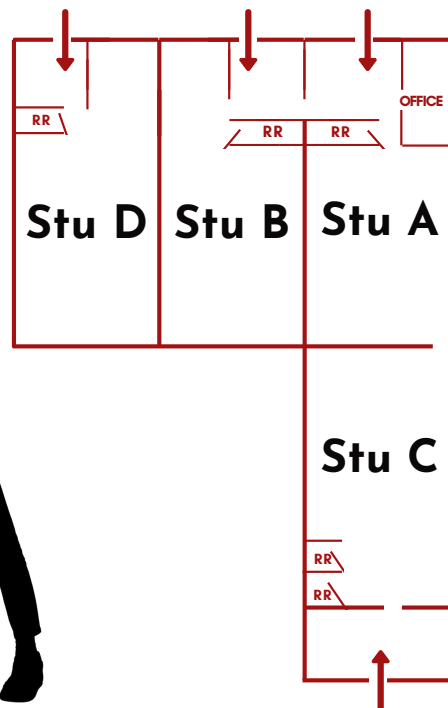
### May '23

- 13th/14th - Legally Blonde Performance

### June '23

- June 17th - 12th Annual Dance Recital "Unite"

## ENCORE Map



# BE MORE ENCORE

PERFORMING ARTS CENTER

## "UNITE"

SEASON 12 '22 - '23

SEPT 12 - JUN 24



ENCORE Hours:  
M-F 9a-9pm  
Sat 9a-12pm

Office Hours:  
M-F  
9a-1pm

REV 3.1



@encorepacnw

### ENCORE Performing Arts Center

7700 SW Nimbus Ave. Bldg 10  
Beaverton, Oregon 97008

info@encorepacnw.com

www.encorepacnw.com

503-608-7207

Quick Response: Text Us!

## enCORE DETAILS:

### Registration

Registration can be completed online at [www.encorepacnw.com](http://www.encorepacnw.com), in person, or via email at [info@encorepacnw.com](mailto:info@encorepacnw.com). An annual member fee of \$25 per student/\$40 per family is due upon registration. Once a student is registered, we consider them enrolled to the end of our season in June.

Enrollment into the correct level is required. We will notify you via email if any changes need to be made to your levels. We anticipate our classes will fill and encourage you to add yourself to any wait list. Typically, we are able to add dancers after reviewing the class's enrollment. Any schedule changes will be noted by the revision updates located on the front of our brochure.

### Tuition

Placement in a class is only guaranteed when accompanied by your first tuition payment. All remaining tuition payments will be processed on the third Tuesday of the month. At ENCORE we process tuition ahead of instruction, therefore, your last payment will occur in May although our instruction will continue in June. You will receive an invoice after each processing date. A \$10 fee will occur for late payments. Returned checks will be charged \$25.

Tuition consists of a fixed monthly charge. There will be 3 to 5 classes per month. On average throughout the season there will be 4 classes per month and the monthly charge will not change. Tuition is not a pay-by-class rate and will not be pro-rated due to vacations, holidays, pre-scheduled closures or absences. This includes classes missed or canceled due to bad weather, instructor illness, etc. No refunds or pro-rates will be issued.

Any/all missed classes can be made up during the current season (Sept - Jun) in a class of your choosing. Submit via email: [info@encorepacnw.com](mailto:info@encorepacnw.com)

### Cancellation Policy

ENCORE reserves the right to cancel and/or combine classes in the schedule depending on demand and registration. If a class cancels and we cannot find a comparable class for your student, the adjusted tuition will be refunded.

In order to withdraw from a class, you must submit a form via the website. Click 'classes' than 'cancelation form' before the tuition processing date (third Tuesday of the month). You are responsible for any fees charged prior to your notice.

You may switch classes within the season one time. No one is allowed to switch (recital) classes after February 1st (unless by instructor approval) as classes are focused on choreography and formations for recital.

## Monthly Tuition Chart\*

\*See Tuition Info Above

30 min	\$28	3.5 hrs	\$188	6.5 hrs	\$272
45 min	\$42	3.75 hrs	\$198	6.75 hrs	\$276
1 hr	\$56	4 hrs	\$208	7 hrs	\$280
1.25 hrs	\$70	4.25 hrs	\$216	7.25 hrs	\$288
1.5 hrs	\$84	4.5 hrs	\$224	7.5 hrs	\$296
1.75 hrs	\$98	4.75 hrs	\$232	7.75 hrs	\$304
2 hrs	\$112	5 hrs	\$240	8 hrs	\$312
2.25 hrs	\$126	5.25 hrs	\$246	8.25 hrs	\$321
2.5 hrs	\$140	5.5 hrs	\$252	8.5 hrs	\$329
2.75hrs	\$154	5.75 hrs	\$258	8.75 hrs	\$337
3 hrs	\$168	6 hrs	\$264	9 hrs	\$345
3.25 hrs	\$178	6.25 hrs	\$268	Unlimited	\$355

2nd child 15% off\*

3+ children \$25 off\*

Family Max: \$450\*

\*family member(s) with the fewest classes qualify for the discounted rate.

### Drop In Pricing

All drop-ins are on a first come, first served basis.

45m..... \$15

1h..... \$18

1.5h..... \$22

1st Trial Class.... FREE

\*Musical Theatre is a flat rate of \$90 monthly and is not included in our season tuition chart. Musical theatre runs to the end of our season with an excerpt in our annual recital.

### Recital Fee

Our end of season recital "UNITE" will be held on June 17th at the Sherwood Center for the Arts. ENCORE does not have a recital fee.

Recital students/classes will be auto-charged a costume fee of \$55 per class, per student. Students may be asked to purchase additional items such as shoes, tights, jewelry and the like to complete the full look. All costumes are yours to take home after recital.

Recital costumes will be ordered by February. Fees will be auto-processed on February 15th. Costumes must be paid in full before the student is able to receive these items. We are unable to offer any refunds for recital costume costs. It is our goal to keep costume and ticket pricing as low as possible.

More information will be coming later in the season.

### Legally Blonde (MT) Musical Theatre

Legally Blonde the Musical will be taking the stage!

Join our musical theatre classes on Fridays. No experience, or audition is necessary for registration. Students will learn acting skills, audition skills, and how to dance/sing while building confidence to take the stage. In-class auditions will occur in early October and each student will receive a part in the musical. Costume fee (\$75) will be auto-processed on Jan 15th.

Students will take the stage on May 13th & 14th at the Sherwood Center for the Arts. It's time for you to SHINE!

Our musical theatre program is \$90 a month and is not included in our sliding scale payment structure.



# Monday



# Tuesday



# Wednesday



# Thursday



# Friday



# Saturday

	<u>A</u>	<u>B</u>	<u>C</u>	<u>D</u>	<u>A</u>	<u>B</u>	<u>C</u>	<u>D</u>	<u>A</u>	<u>B</u>	<u>C</u>	<u>D</u>	<u>A</u>	<u>B</u>	<u>C</u>	<u>D</u>	<u>A</u>	<u>B</u>	<u>C</u>					
<b>9am</b>	<div style="border: 2px solid red; padding: 5px;"> <p><b>Level Key</b>                      Beg &amp; Level I = No Exp Needed                       Level I/II = No Exp Needed/1-2yrs Training                       Level II &amp; up = Based off of training, age and ability. Inquire for a level assessment via email at <a href="mailto:info@encorepacnw.com">info@encorepacnw.com</a></p> </div>																							
<b>10am</b>																								
<b>11am</b>																								
<b>12pm</b>																								
<b>1pm</b>																								
<b>2pm</b>																								
<b>3pm</b>																								
<b>4pm</b>																								
<b>5pm</b>																								
<b>6pm</b>																								
<b>7pm</b>																								
<b>8pm</b>																								
<b>9pm</b>																								

- Class Information:**
- Ages listed are guidelines only. Some students (based on skills) may be able to join classes outside the age range. Inquire via email for an assessment.
  - Our prerequisites, class etiquette, class descriptions, style attire and instructor bios are on our website.
  - An \* indicates that a previous class is required in order to register.
  - Upon request, parents can view class(es) via our password protected website. Inquire at the front desk for the daily password.
  - Our classrooms are strictly for students & instructors only, thus allowing for a more focused learning environment.
  - Grayed out classes are audition only; inquire via email for a private audition.

\*MT has a separate program fee of \$90 monthly.

